

National Traffic Incident Response Awareness Week 2019

ALL PARTNERS WEBEX, AUGUST 20, 2019

THANKS THANKS THANKS THANKS THANKS THANKS

WE THANK YOU FOR BEING HERE, BEING INVOLVED AND ENGAGED
IN PROMOTING A TEAM EFFORT THAT INVOLVES EVERY SEGMENT
OF OUR TRANSPORTATION COMMUNITY – EVERY SINGLE PERSON.



PROGRESS UPDATE

- POSTER AND THEME EXPECTED TO BE APPROVED THIS WEEK
- PLANNING FOR A NOVEMBER 15 EVENT IN WASHINGTON, D.C.



SAFETY IS A TEAM EFFORT

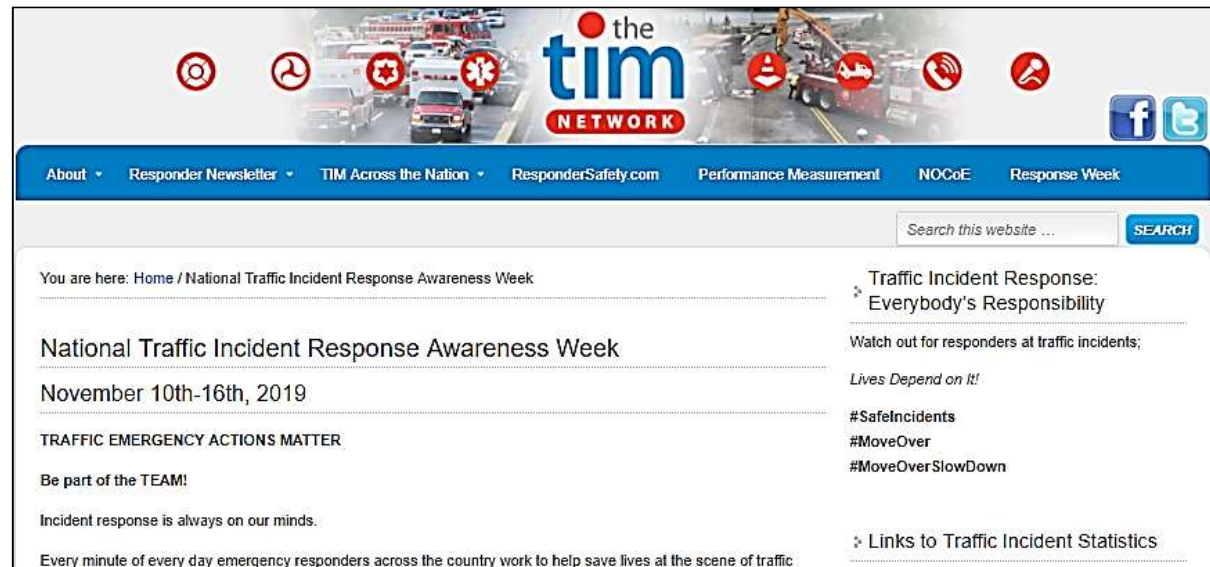
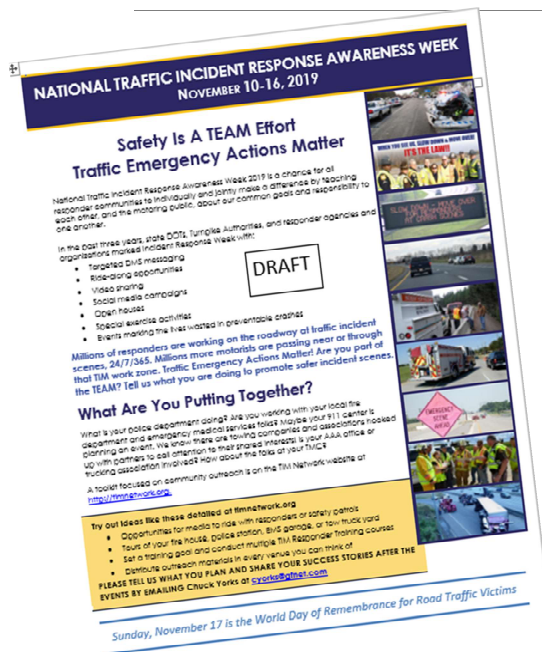
Traffic Emergency Actions Matter

☐ SHARING IN MONTHLY CALLS ANY IDEAS TO

- ✓ Promote across all communication channels
- ✓ Promote across all disciplines in our practice
- ✓ Promote public role in TIM safety

FUTURE CALLS: September 17, October 15

TIM Network has resources



New material (and some oldies, but goodies) are included in the Outreach tab on the Response Week page.



The TIM Business Case

PAUL JODOIN,
FEDERAL
HIGHWAY
ADMINISTRATION

Talking TIM (Traffic Incident Management) Webinar Series (TIM)



Top Photos: Enforcement Engineering, Inc.

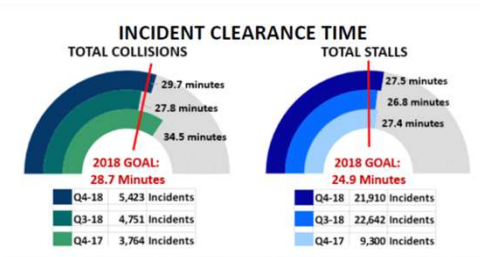


Photo: National TIM Responder Training Program

New Business Case Concepts for Traffic Incident Management

Paul Jodoin, FHWA TIM Program Manager

March 19, 2019

Traffic Incidents Impact...



LIVES



- Deaths and Injuries.
- Responders Struck.
- Secondary Crashes.
- Motorists and others Involved.

TIME



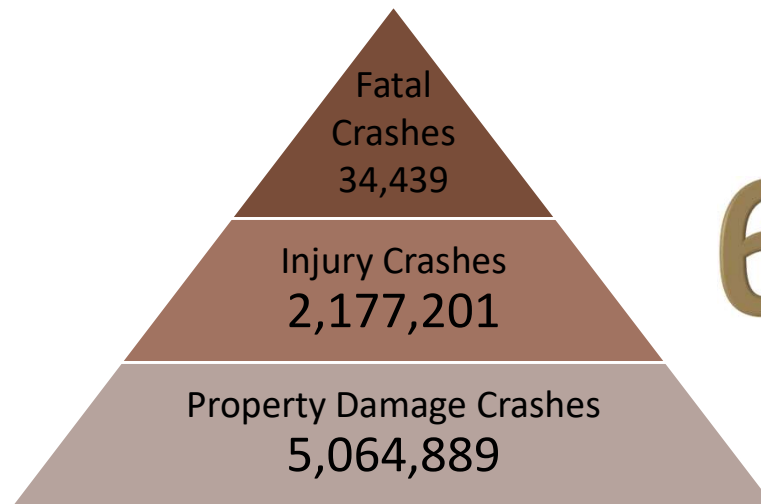
- Delays.
- Travel Time Reliability.
- Quality of Life.

MONEY



- Congestion.
- Lost Productivity.
- Wasted Fuel.
- Air Quality.
- Freight and Commerce.

Traffic Incidents Impact...Lives



6X

Increased
crash risk
when there
is an earlier
crash

10,874

Drunk Driving Deaths
in 2017

3,450

Distracted Driving
Deaths in 2017

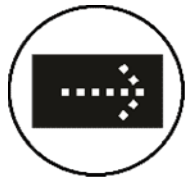
Traffic Incidents Impact...Lives



Annual Line of Duty Deaths (LODD) DEATHS

- 2 Fire/EMS workers.
- 12 police officers.
- 13 tow operators.

Of the 136 worker fatalities in work zones in 2015, 24 were pedestrians struck by vehicles.



14 service patrol operators have been killed at incidents since 1999 (20 yrs.)

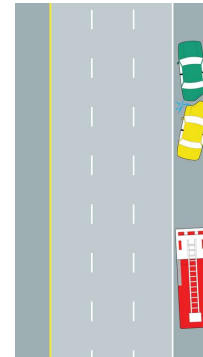
Traffic Incidents Impact...Time



Incidents Cause
About **25%** of All
Congestion.

On average, Americans lost about 97 hours a year due to congestion, costing them nearly \$87 billion in 2018, an average of \$1,348 per driver.

The Texas Transportation Institute (TTI) estimates that between **53%** and **58%** of delay in urban areas is attributed to incidents.

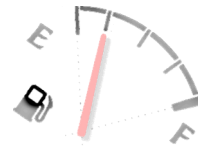


Even a crash
isolated to the
shoulder reduces
the roadway
capacity by **17%**.

Traffic Incidents Impact...Money



If averaged across the U.S. population, motor vehicle crashes cost nearly **\$784 per person** in 2010.



24 gallons of fuel for every driver annually, per a 2011 report

\$836 Billion
Total Estimated economic damage associated with crashes in 2010.

2016 Trucking Industry:

- 1.2 billion hours of delay or lost productivity associated with congestion.
- Equivalent of 425,000 commercial truck drivers sitting idle for an entire year!

Traffic Incident Management

Saves Lives, Saves Time, and Saves Money



Photos: National TIM Responder Training Program

Traffic Incident Management

Saves Lives, Saves Time, and Saves Money



In surveys **78%** of responder supervisors rated personnel who attended TIM training as “more safe” as a result.

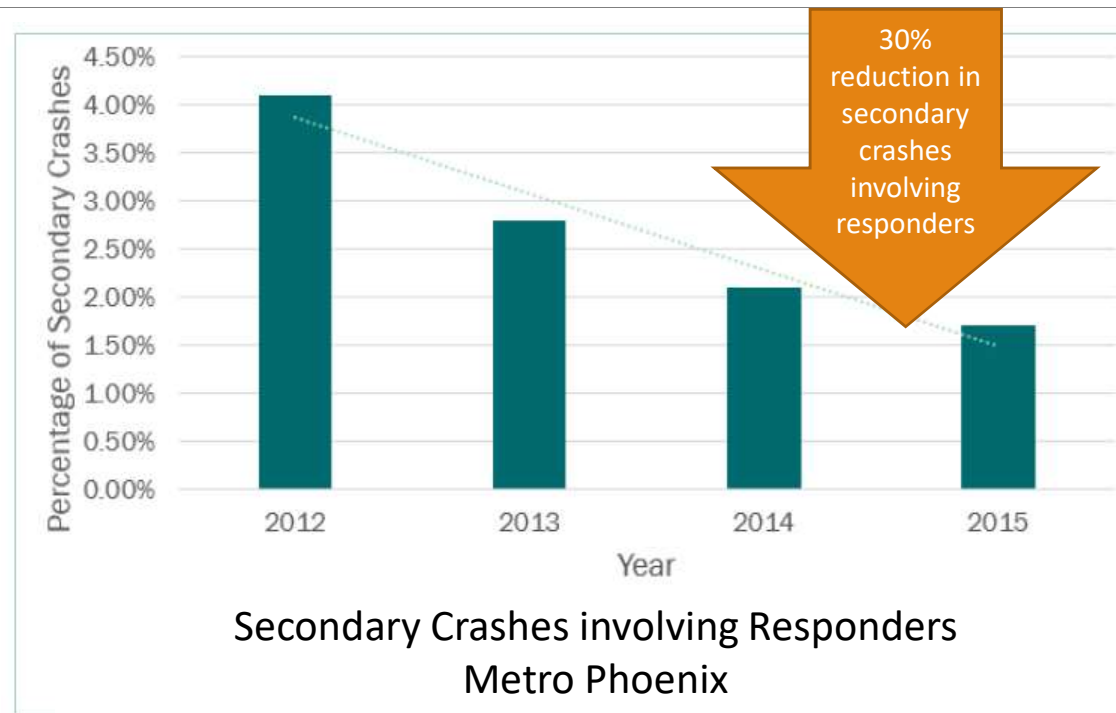


Photo: Florida Highway Patrol

4 out of 5 Florida drivers “move over” for stopped responder vehicles according to observational surveys, attributed to active enforcement (20,000 citations annually).

Traffic Incident Management

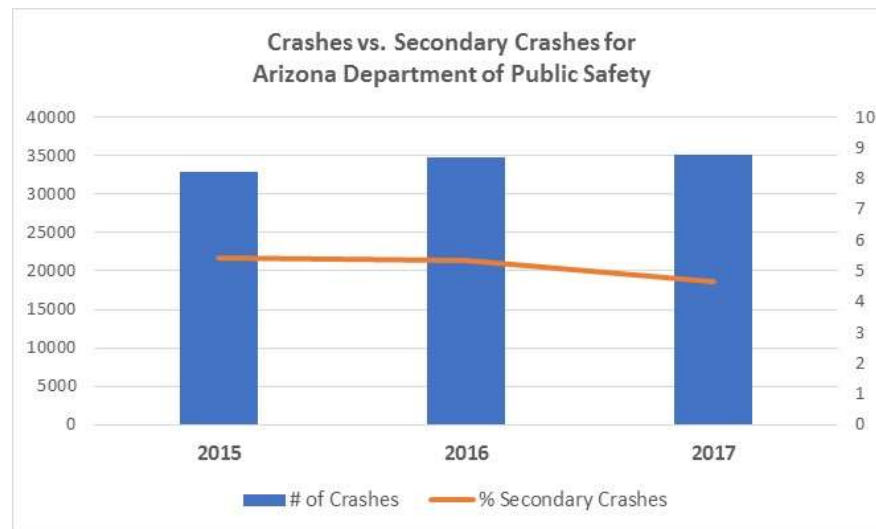
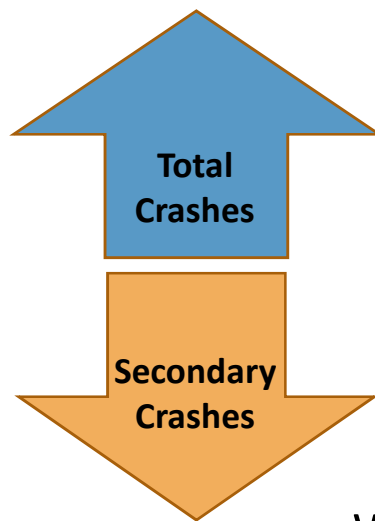
Saves Lives, Saves Time, and Saves Money



Source: FHWA.

Traffic Incident Management

Saves Lives, Saves Time, and Saves Money



While total crashes have increased in Arizona, the number of secondary crashes has decreased due to TIM training and practices among responders.

Traffic Incident Management

*Saves Lives , **Saves Time** , and Saves Money*



Computer Aided Dispatch (CAD) integration has helped states like Minnesota and Florida detect, verify, and respond to incidents more quickly. More than **72%** of Minnesota incidents and **42%** of Florida crashes are attributed to State police CAD integration in Traffic Management Center (TMC) systems.



Photo: Enforcement Engineering, Inc.

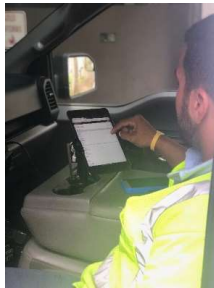


Photo: PRTHA

Many jurisdictions now use smart devices among safety service patrols to expedite incident detection and response. The Puerto Rico Highway Transportation Authority (PRTHA) is an example of the innovation.

Traffic Incident Management

*Saves Lives , **Saves Time** , and Saves Money*



Driver removal and authority removal TIM laws are enhanced by agency policies such as “Push, Pull, Drag, or Drive.” Oregon experienced nearly a **4-fold increase** in push, pull, or drag (PPD) events after they emphasized the concept in training.

Statewide Pushed, Pulled & Dragged Vehicles



Clearance times reduced 35% when PPD used.

Traffic Incident Management

*Saves Lives , **Saves Time**, and Saves Money*



TIM training in Virginia reduced average RCT to 56 minutes, a **41-minute reduction** from 2017 to 2018. Average incident clearance time (ICT) was reduced by **31%**.



Photo: Enforcement Engineering, Inc.

When the Maryland's Coordinated Highways Action Response Team (CHART) is involved in incident response, average incident clearance time (ICT) are **31% shorter**.

Traffic Incident Management

*Saves Lives , **Saves Time** , and Saves Money*



The Oro Valley, Arizona Police Department found that when officers became focused on TIM practices and time was tracked in Computer Aided Dispatch (CAD), RCT and ICT were **reduced by 32%** during the first 6 months of 2018.

	Before	After	Change
RCT	28	19	-32%
ICT	38	26	-32%



Photo: Enforcement Engineering, Inc.

Traffic Incident Management

*Saves Lives , Saves Time, and **Saves Money***



With millions of traffic incidents annually in the U.S., saving just minutes on the scene aggregates to thousands of hours available for other types of work for police, fire, EMS (emergency medical services), transportation, and towing agencies.

From 2010 to 2011, the Arizona DPS effort to clear incidents using TIM has resulted in a **3% increase** in unobligated patrol time for **44,565 hours or about 25 FTEs (full time equivalents)!**



Traffic Incident Management

*Saves Lives , Saves Time, and **Saves Money***



- Overall, the delay reduction due to CHART's services in 2017 was estimated at 38.62 million vehicle-hours, which equates to more than **\$1.4 million** in benefits (delay times, fuel consumptions, and emissions).
- Oregon's incident response program has reduced scene time in Portland by 30 seconds per incident, translating into delay savings that equate to the program cost.

Traffic Incident Management

Typical benefits from TIM strategies

- Improved safety for responders and the traveling public.
- Reduced secondary crashes.
- Improved efficiency and mobility of the roadway system.
- Reduced economic impact due to the delay of commercial goods.
- Reduced environmental impacts and energy use (less air pollution and wasted fuel).
- Minimized delay of commercial goods.



FHWA

Office of Operations

Paul Jodoin

Paul.Jodoin@dot.gov

(202) 366-5465

Jim Austrich

James.Austrich@dot.gov

202-366-0731

Alabama
Alaska
Arizona
Arkansas
California
Colorado
Connecticut
Delaware
Florida
Georgia
Hawaii
Idaho
Illinois

Indiana
Iowa
Kansas
Kentucky
Louisiana
Maine
Maryland
Massachusetts
Michigan
Minnesota
Mississippi
Missouri
Montana

Nebraska
Nevada
New Hampshire
New Jersey
New Mexico
New York
North Carolina
North Dakota
Ohio
Oklahoma
Oregon
Pennsylvania

Rhode Island
South Carolina
South Dakota
Tennessee
Texas
Utah
Vermont
Virginia
Washington
West Virginia
Wisconsin
Wyoming

States roll call of plans

Please share your best

Chuck Yorks of Gannett Fleming and Tim Shareswell of TIM Network are collecting ideas.

Chuck will accept all emailed links, messages, photos, promotional examples at:

cyorks@gfnet.com

Our next webinar is Tuesday, September 17, 2 p.m. Eastern.

Any volunteers to present special material can contact Chuck.